

# Proteus offers solution for Weight Control, Cost estimating and Contract follow-up

Proteus has proven its value as a critical reporting and analysis tool in some of the world's largest Oil & Gas projects.

## Feature highlights:

- Pulls data from your existing 3-D Model and/or Excel
- Weight Control and Center of Gravity
- Estimates Manhour and Material costs from 3-D Model
- Creates its own history log, showing weight / cost history plus changes in detail data relative last stored snapshot
- Allows collaboration with client on approval of items
- Virtually unlimited possibilities for customizations...



Proteus is ONE software, but it can be configured to solve very different challenges.

## An investment in Proteus can solve a host of Project Management challenges – far beyond the realm of Weight Control...

Proteus was originally developed for combining (planning) data from disparate sources, and make it appear to the planners/project managers as if it all came from in ONE system.

Proteus is the only tool on the market that can address virtually any Project Management challenge and quickly add the flexibility your projects need for interacting with your existing data – wherever they may reside...

# Application Screenshots

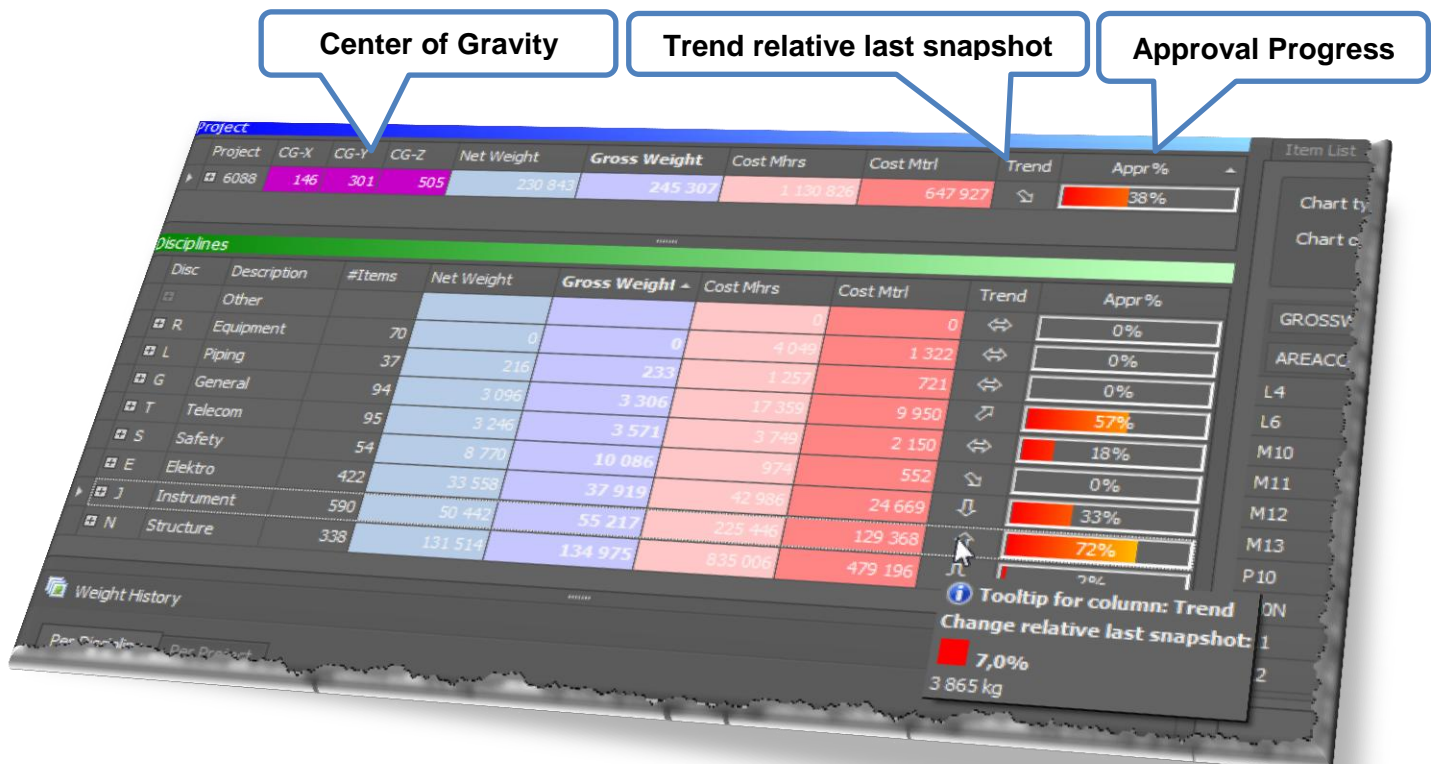
Proteus is a Greek mythological figure that can assume any form he wants.

## Instant overview over Weight, Cost, and Contract

The solution gives an immediate overview over:

- Weights
- Costs
- Contract progress
- Detail changes relative last reference
- Weight / Cost / Approval history (per discipline / project)

It also allows for various ways of collaboration between contractor and customer regarding approval of "Contract Items".



# Application Screenshots

Proteus  
User Interface

## Weight History



### Show weight / cost / approval history graphs

Proteus has a "button" that can be pressed to generate a snapshot of data – down to object level if needed. Each time this is done, a new point on the history curve will appear – for entire project, and per discipline.

Since you have the option of storing lowest level weight data, you may also create historic graphs based on other criteria, such as per area

# Application Screenshots

Proteus  
User Interface

## Show changes in data relative last stored reference point

Item ID	Status	Material	Type	Weight	Percentage
tion 007		BLD	IO P21 L	4 B3	8%
tion 008		BLD	IO P21 L	4 B3	8%
tion 009	Modified				
tion 010	Modified	BLD	IO P21 L	4 B3	8%
tion 011		BLD	IO P21 L	15 B3	8%
tion 012	Modified	BLD	IO P21 L	4 B3	8%
tion 013		BLD	IO P21 L	4 B3	8%
tion 014		BLD	IO P21 L	10 B3	8%
tion 015		BLD	IO P21 L	4 B3	8%
tion 016		BLD	IO P21 L	4 B3	8%
tion 017		BLD	IO P23 L	15 B3	8%

**Tooltip for column: Status**  
 Format: Field (Newvalue / OldValue)  
 Area (P21 / P14)  
 WeightStatus (B3 / B1)  
 Code1 ( / Y)

Perception  
Psychology lets  
the eye see data  
that you have  
defined as  
"important".

## Active use of Perception Psychology – let important “facts” be seen

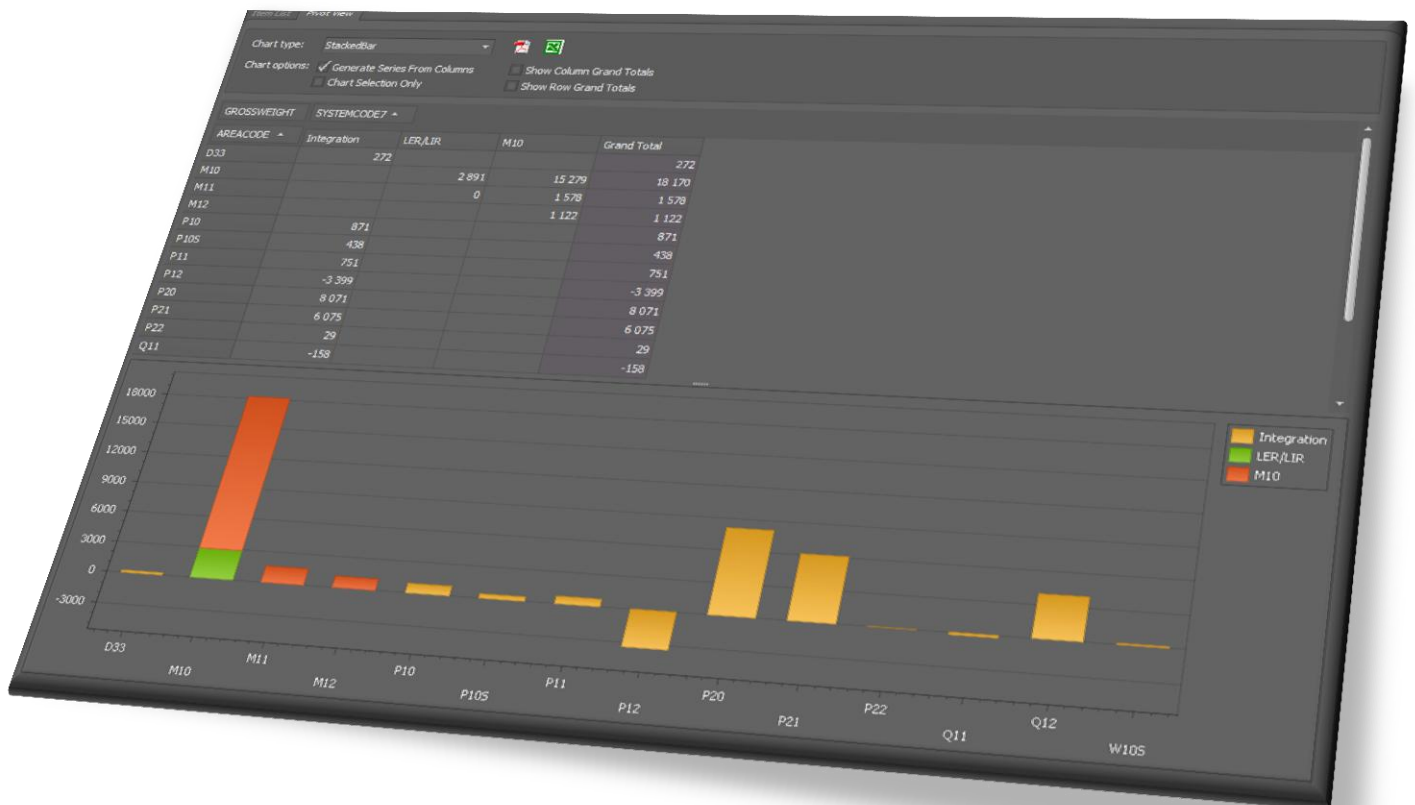
The screenshot above shows how lowest level items can reflect changes relative last snapshot, by highlighting changes in orange, and showing tooltip of the cell's last value - Or as in example above: showing a list of changes made to the entire row of data.

This can save a tremendous amount of time when trying to understand the causes of change in weight from one month to another.

# Application Screenshots

Proteus  
User Interface

## Create ad-hoc Pivot Charts

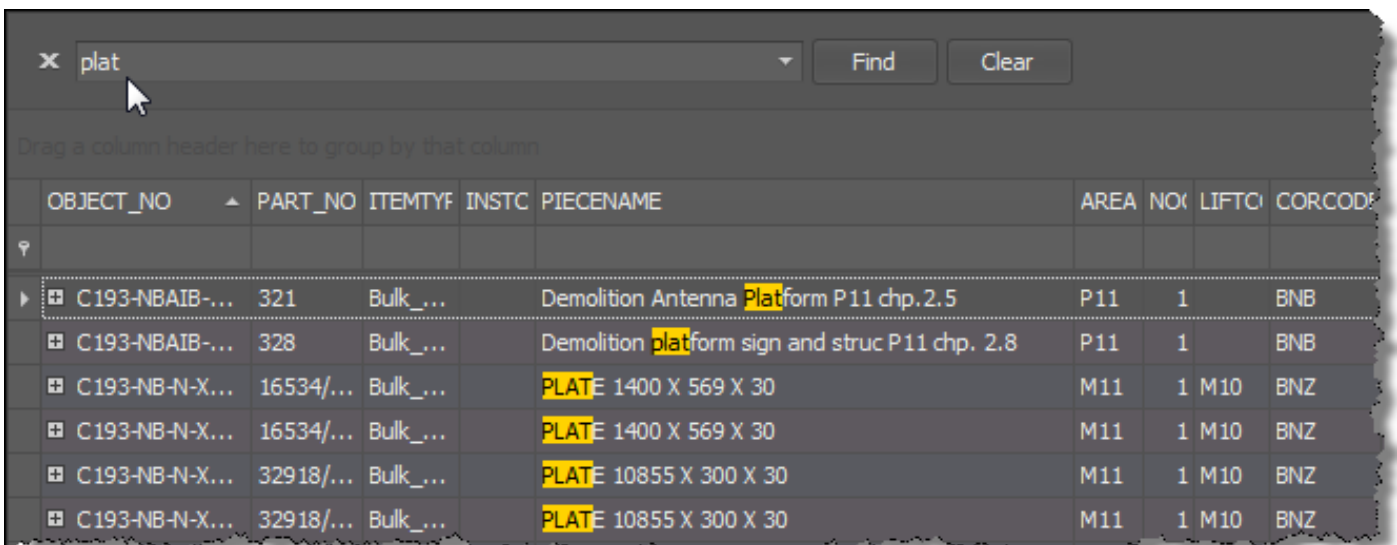


Pivot reports can easily be created within Proteus, and the result shown in a graph. Useful Pivot reports can be saved as a named report, and recreated at a later time.

# Application Screenshots

Proteus  
User Interface

## Easy navigation in your detail data



OBJECT_NO	PART_NO	ITEMTYF	INSTC	PIECENAME	AREA	NO	LIFTC	CORCOD
C 193-NBAIB-...	321	Bulk_...		Demolition Antenna Platform P11 chp. 2.5	P11	1		BNB
C 193-NBAIB-...	328	Bulk_...		Demolition platform sign and struc P11 chp. 2.8	P11	1		BNB
C 193-NB-N-X...	16534/...	Bulk_...		PLATE 1400 X 569 X 30	M11	1	M10	BNZ
C 193-NB-N-X...	16534/...	Bulk_...		PLATE 1400 X 569 X 30	M11	1	M10	BNZ
C 193-NB-N-X...	32918/...	Bulk_...		PLATE 10855 X 300 X 30	M11	1	M10	BNZ
C 193-NB-N-X...	32918/...	Bulk_...		PLATE 10855 X 300 X 30	M11	1	M10	BNZ

In Proteus, the user is given many ways to customize the user interface to suit his/her needs in an optimal way depending on the task at hand:

- Filter data using “auto filter” or filter builder
- Sorting across multiple fields
- Hiding / showing columns from source, as well as calculated ones.
- Grouping (by drag and drop) of data in N-levels
- Changing column header texts and tooltips, plus a large range of other properties
- Adding (complex) conditional formatting to a column.
- All of the above settings can be saved as a named “Layout” and recreated at a later time with the click of a button.
- Exporting what is seen on screen to Excel or a large range of other formats.