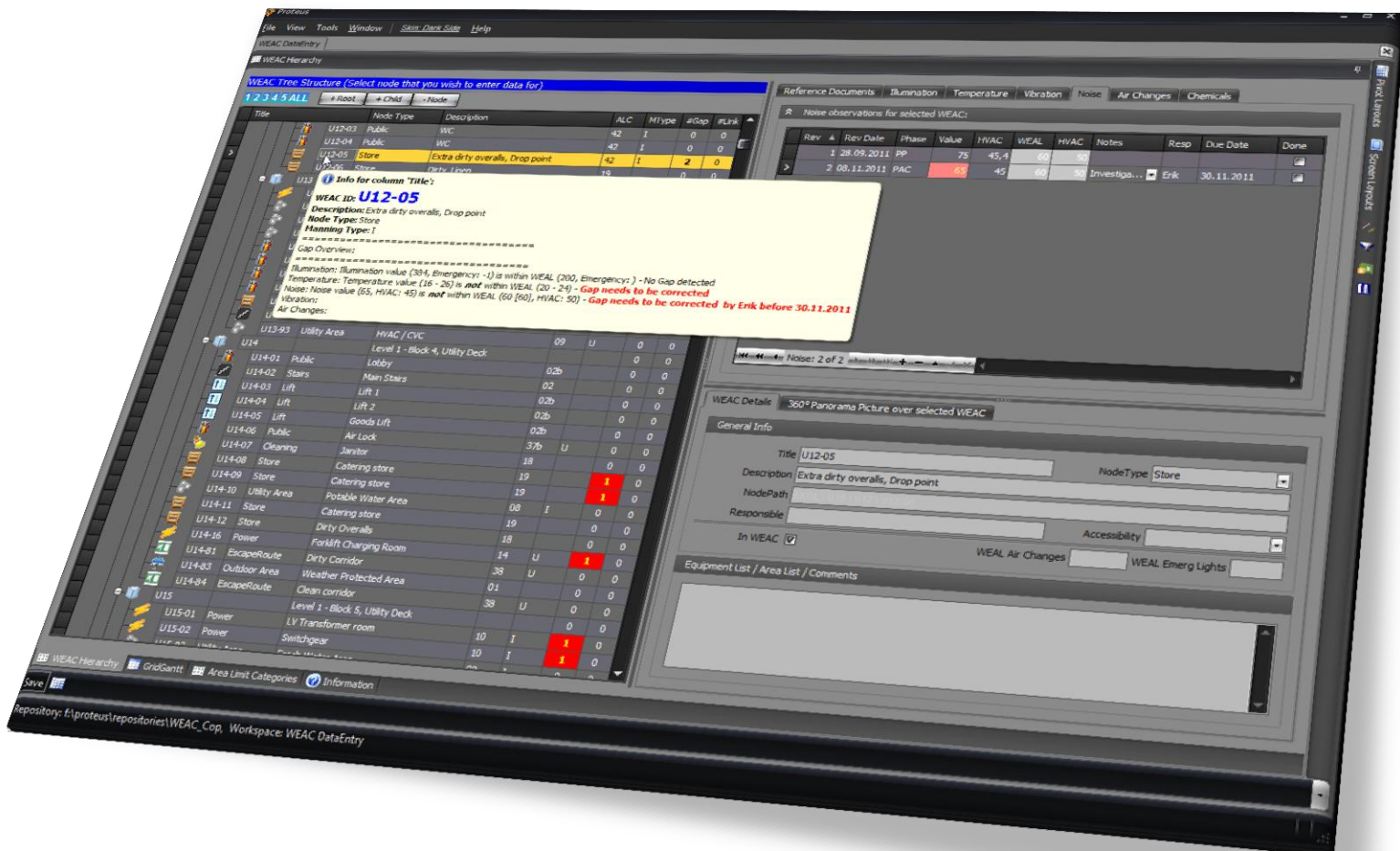
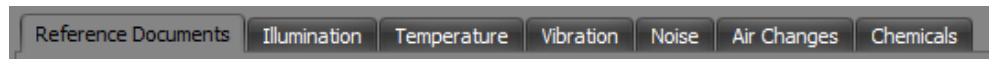


## Proteus offers solution for WEAC - Work Environment Area Charting

Proteus has proven its value as a critical reporting and analysis tool in some of the world's largest Oil & Gas projects.

### Feature highlights:

- WEAC data entry for each phase – giving full life cycle traceability for all WEACs on any number of installations.
- Documents NORSOK compliance, and identifies Gaps.
- Ties important reference documentation for a WEAC directly to your own document control system (Livelihood, SAP, other)
- Produce WEAC report directly in pdf.
- Currently supported WE-Factors: Illumination, Temperature, Noise, Vibration, Air-Changes, and Chemicals). But can easily be extended to others.

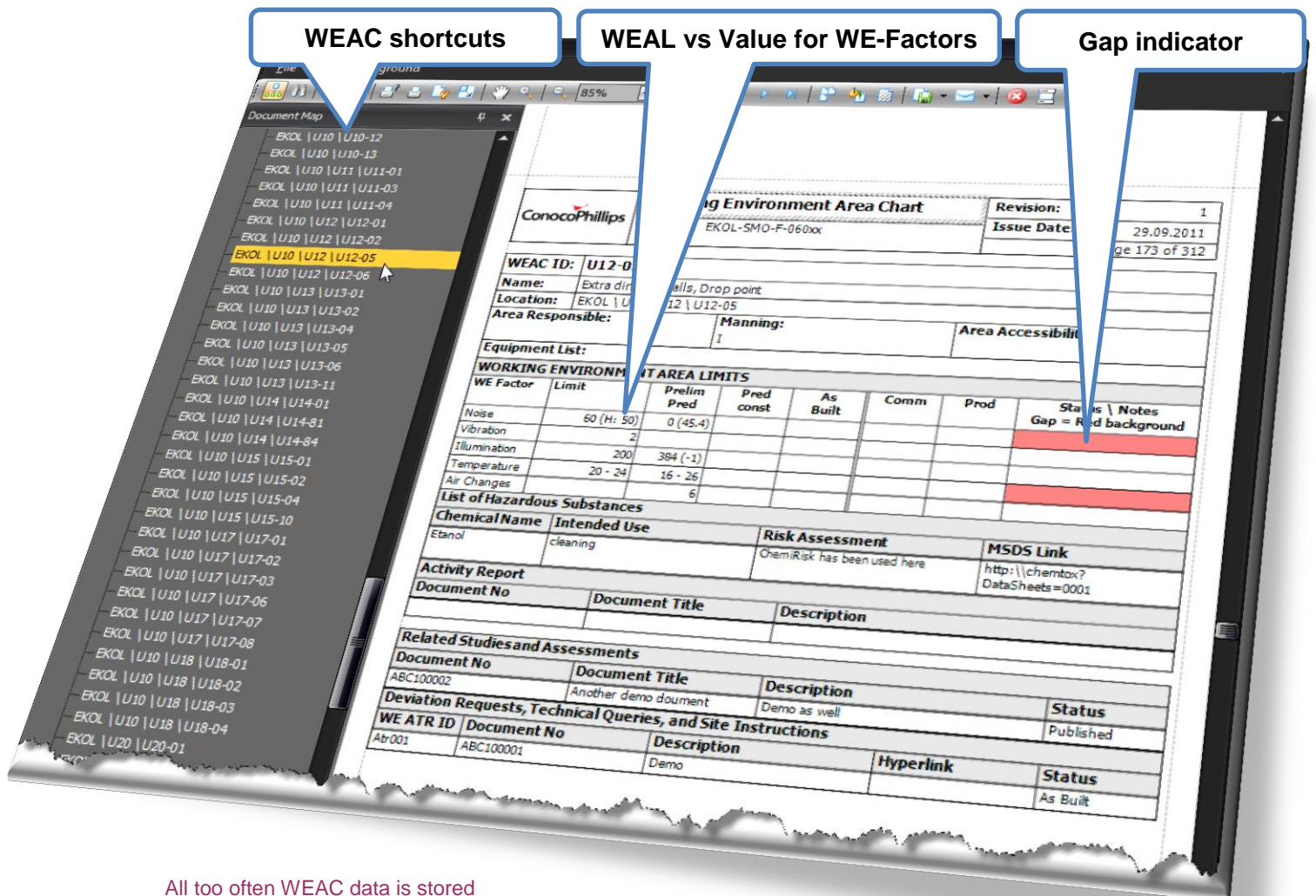


# Application Screenshots

## Instant overview over Gaps and NORSOK compliance

WEAC Report produced by clicking a button, containing:

- Gaps relative NORSOK WEALs, or your own overrides of such WEALs.
- Listing of WEALs for each WEAC.
- Listing of “measured values” from earliest phase in the lifecycle - *Preliminary Prediction*, through *Predicted at Construction*, *As Built*, *Commissioning*, *Production*, and even *Decommissioning*.
- List of Chemicals for each WEAC.
- List of Reference Documents for each WEAC.
- Activity Report info for the WEAC



**WEAC shortcuts**

**WEAL vs Value for WE-Factors**

**Gap indicator**

**Working Environment Area Limits Table:**

WE Factor	Limit	Prelim Pred	Pred const	As Built	Comm	Prod	Status	Notes
Noise	60 (H: 50)	0 (45,4)					Gap = Red	background
Vibration	2							
Illumination	200	384 (-1)						
Temperature	20 - 24	16 - 26						
Air Changes		6						

**List of Hazardous Substances Table:**

Chemical Name	Intended Use	Risk Assessment	MSDS Link
Ethanol	cleaning	ChemRisk has been used here	<a href="http://chemtox?DataSheets=0001">http://chemtox?DataSheets=0001</a>

**Activity Report Table:**

Document No	Document Title	Description
ABC100002	Another demo document	Demo as well

**Deviation Requests, Technical Queries, and Site Instructions Table:**

WE ATR ID	Document No	Description	Hyperlink	Status
Atr001	ABC100001	Demo		As Built

All too often WEAC data is stored in Word Documents, with no possibility for systematic analysis on its content. The inherent potential of the data then remain “untapped”...

## Application Screenshots

Proteus  
User Interface

### Create ad-hoc Pivot Charts



### Get “instant” answers to any question about your WEAC-data

The data entered into Proteus WEAC is a valuable asset to your company – especially as time goes on, and your organization has collected a wealth of historical data for various WE-factors - on all its areas, across all its installations...

Proteus has a range of tools for analyzing and visualizing this type of data. It can then provide important indicators of where problems are more likely to occur, and hence where proactive measures are most effective.

# Application Screenshots

Proteus  
User Interface

## Link to documents in your existing Document Control System



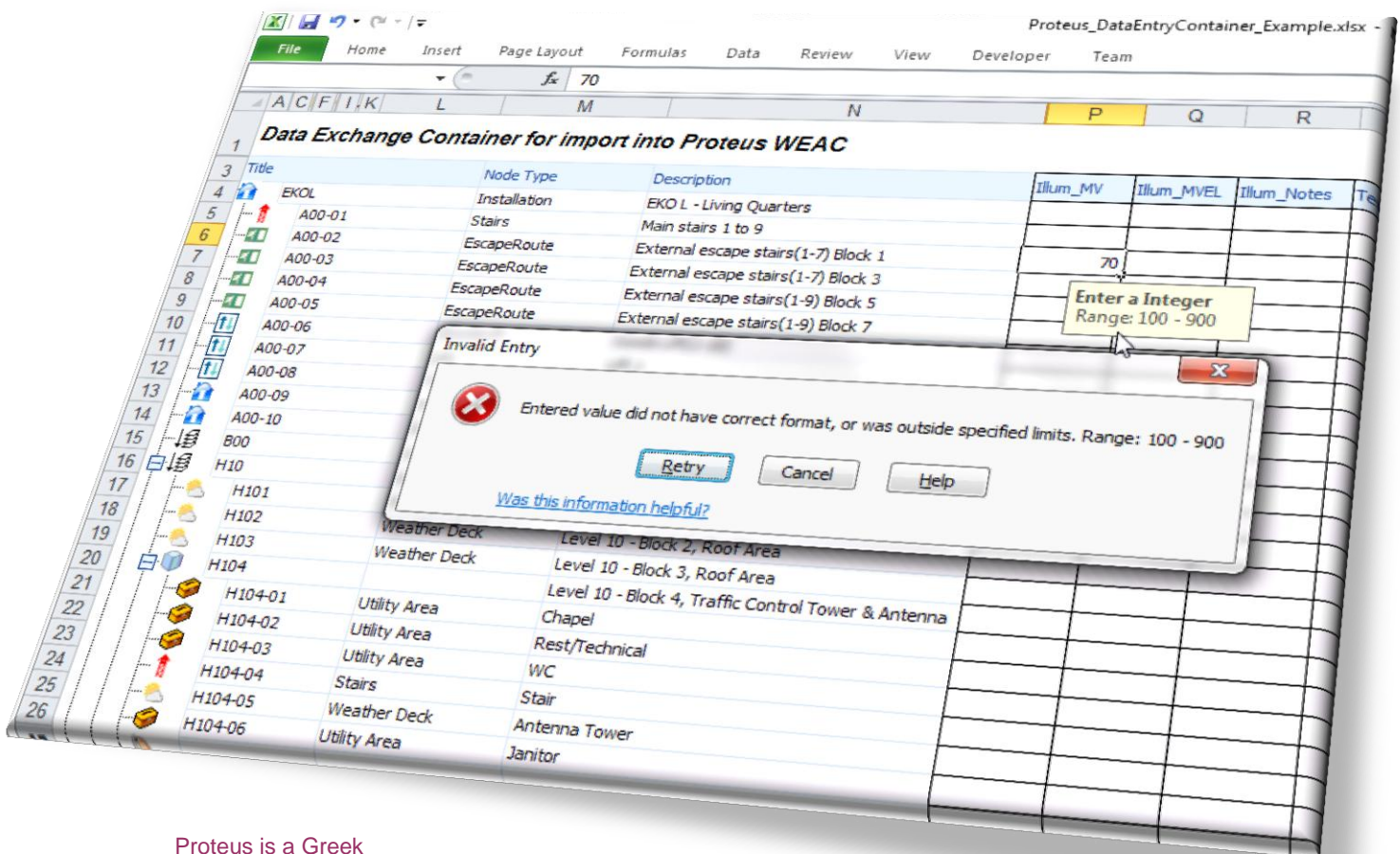
Each WEAC can have any number of references to either a document on a file-share, or to a web link.

Most existing Document Control Systems offer some sort of web-based interface to its documents, and Proteus WEAC can easily accommodate how such a link is produced given a document number.

## Application Screenshots

Proteus  
User Interface

### Possibility to import WE-data from subcontractors



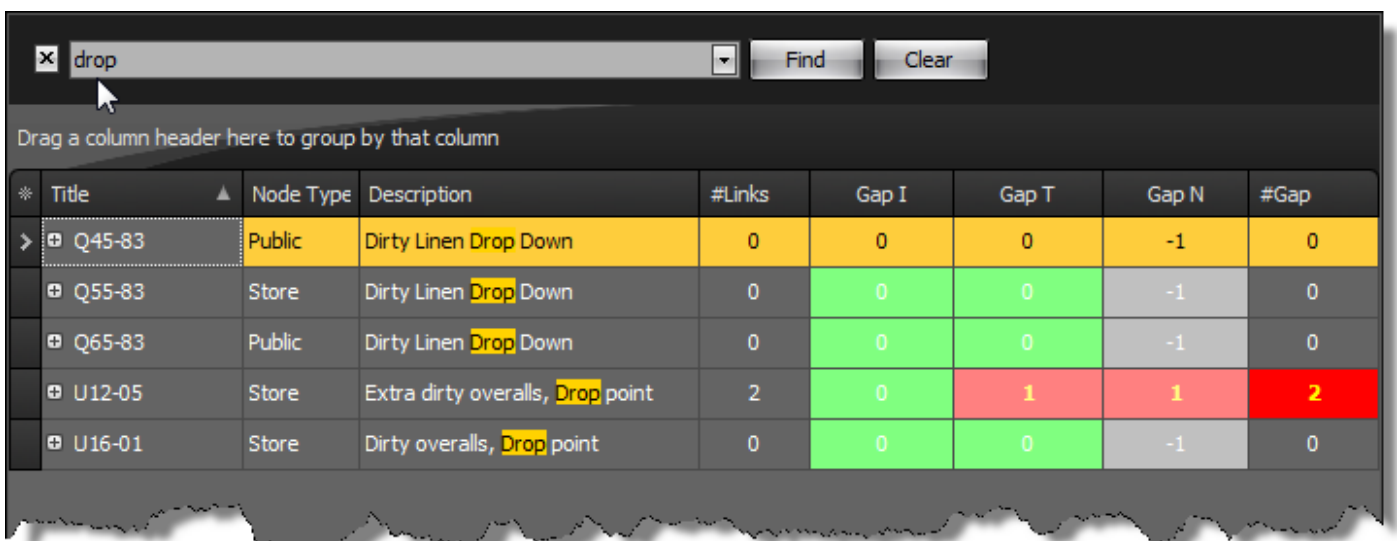
Proteus is a Greek mythological figure that can assume any form he wants.

Proteus can produce special "Data Exchange Containers" using Excel. The produced workbook resembles the tree-structure seen in Proteus, and allows e.g subcontractors or others to effectively enter WE-data, including validation of entered values for improved quality assurance.

# Application Screenshots

Proteus  
User Interface

## Effective tools for showing “important facts”



Drop a column header here to group by that column

* Title	▲ Node Type	Description	#Links	Gap I	Gap T	Gap N	#Gap
> ⊕ Q45-83	Public	Dirty Linen Drop Down	0	0	0	-1	0
⊕ Q55-83	Store	Dirty Linen Drop Down	0	0	0	-1	0
⊕ Q65-83	Public	Dirty Linen Drop Down	0	0	0	-1	0
⊕ U12-05	Store	Extra dirty overalls, Drop point	2	0	1	1	2
⊕ U16-01	Store	Dirty overalls, Drop point	0	0	0	-1	0

In Proteus, the user is given many ways to customize the user interface to suit his/her needs in an optimal way depending on the task at hand:

- Filter data using “auto filter” or filter builder
- Sorting across multiple fields
- Hiding / showing columns from source, as well as calculated ones.
- Grouping (by drag and drop) of data in N-levels
- Changing column header texts and tooltips, plus a large range of other properties
- Adding (complex) conditional formatting to a column.
- All of the above settings can be saved as a named “Layout” and recreated at a later time with the click of a button.
- Exporting what is seen on screen to Excel or a large range of other formats.

Perception  
Psychology lets  
the eye see data  
that you have  
defined as  
“important”.